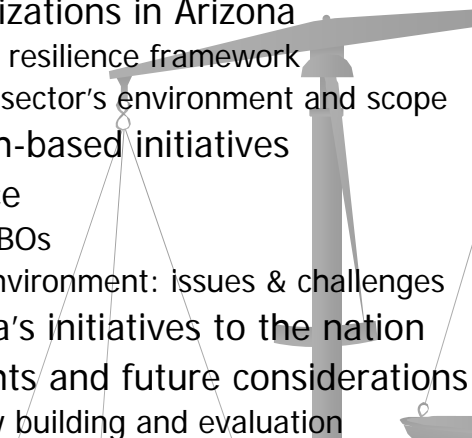




Faith, Hope & Charitable Choice in Arizona: 2007

John Stuart Hall
Arizona State University
January 25, 2007

WHAT THIS TALK WILL COVER

- 
- Faith-based organizations in Arizona
 - Looking through a resilience framework
 - A snapshot of the sector's environment and scope
 - Government / faith-based initiatives
 - Charitable Choice
 - State funding to FBOs
 - The contracting environment: issues & challenges
 - Comparing Arizona's initiatives to the nation
 - Concluding thoughts and future considerations
 - Outreach, capacity building and evaluation

FBOs IN ARIZONA: WEAKNESSES OF THE SECTOR

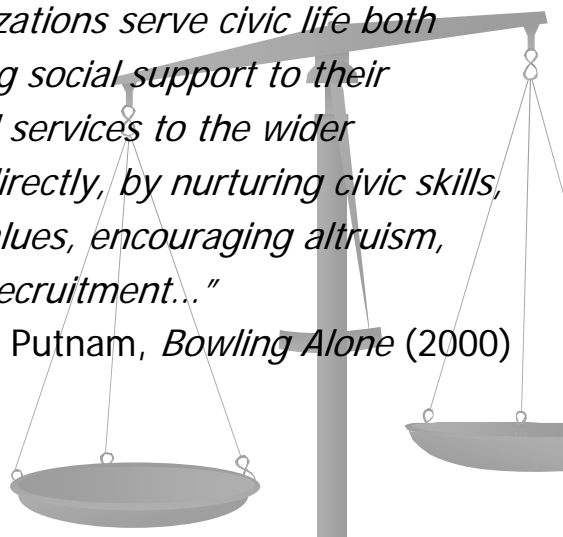
- Constitutional issues connected to Separation of Church and State
- Narrow view of community
- More bonding than bridging
- Professionalism and training



Faith-Based Organizations (FBOs) in Arizona: A Resilience Perspective

"Faith-based organizations serve civic life both directly, by providing social support to their members and social services to the wider community, and indirectly, by nurturing civic skills, inculcating moral values, encouraging altruism, and fostering civic recruitment..."

Robert Putnam, *Bowling Alone* (2000)



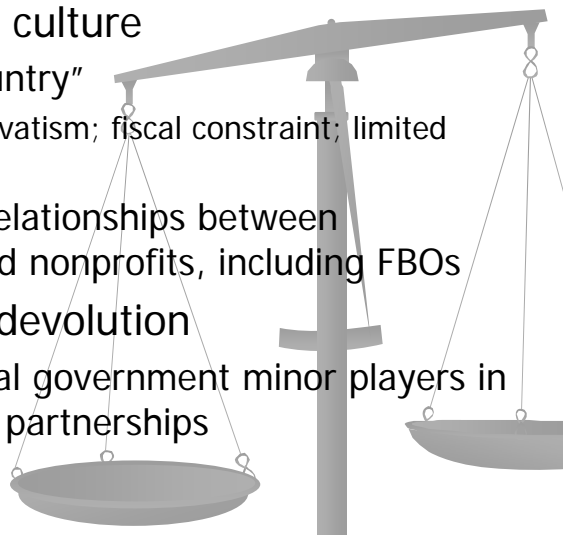
FBOs in Arizona: Strengths of the Sector

- Resilience of the sector
- Creativity & responsiveness to immediate needs within communities
- Connectivity & closeness to community
- Ability to rapidly mobilize volunteers to meet immediate needs



FBOs in Arizona: A Snapshot

- Arizona political culture
 - "Goldwater Country"
 - Political conservatism; fiscal constraint; limited government
 - Longstanding relationships between government and nonprofits, including FBOs
- State-centered devolution
 - County and local government minor players in public / private partnerships



FBOs in Arizona: Scope of the Sector

- 3,300 religious congregations for more than 2 million people belonging to 94 different religions*
- 1,108 religious and spiritual 501(c)(3)s**
- 7.9 percent of registered AZ 501(c)(3)s**
- 84.6 million reported FBO receipts*
- 1.3 percent of charitable receipts**

*Source: Delaney, T. & the Arizona Community Foundation. (2003). *The Spirit of Arizona*.

**Source: The Urban Institute's National Center for Charitable Statistics, Core Files 2006.

Government / FBO Initiatives: Connecting to the State

Table 1: Proportion of Contracts Awarded to Faith-Based Organizations within Specified Divisions of DES

Community Services Administration	11.0%
Division of Children, Youth & Families	9.6%
Jobs Administration	4.0%
Child Care Administration	3.3%

Comparing Arizona to the Nation

Table 2: Federal Support for Faith-Based Organizations 2002-2004

	2002		2003		2004	
	AZ	U.S.	AZ	U.S.	AZ	U.S.
Share of federal awards in state that went to FBOs	3.5%	11.6%	6.9%	12.2%	7.1%	12.8%
Share of federal funding in state that went to FBOs	9.4%	17.8%	19.6%	17.1%	8.0%	17.8%
Dollar amount of federal awards the went to FBOs	\$5.7 million	--	\$15.2 million	--	\$6.9 million	--

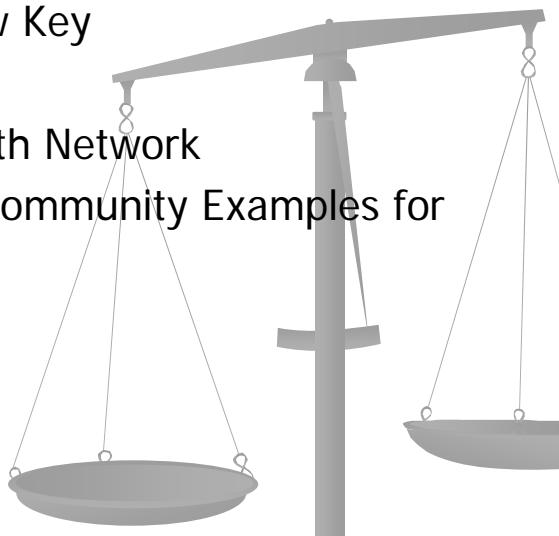
Source: Nelson A. Rockefeller Institute of Government, The Roundtable on Religion and Social Welfare Policy, http://www.socialpolicyandreligion.org/state_representations/state_info.cfm?state=AZ

RECENT NATIONAL TRENDS

- Areas in which government / FBO partnerships are growing
 - Substance abuse treatment
 - Abstinence education
 - Employment services
 - Supplemental education services (e.g. after-school programs)
- Legal challenges to faith-based initiatives

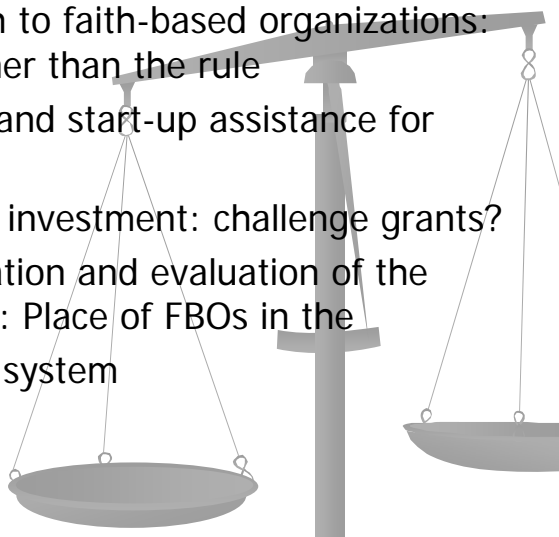
LEVERAGING RESOURCES FOR COMMUNITY: RECENT ARIZONA EXAMPLES

- Health In a New Key
- Rehoboth
- Arizona Interfaith Network
- Other Arizona Community Examples for discussion



Conclusions & Future Considerations

- Targeted outreach to faith-based organizations: the exception rather than the rule
- Capacity building and start-up assistance for FBOs
- Effective strategic investment: challenge grants?
- Systemic classification and evaluation of the faith-based sector: Place of FBOs in the larger community system



Resources

- Nelson A. Rockefeller Institute of Government's Roundtable on Religion & Social Welfare Policy
 - <http://www.religionandsocialpolicy.org>
- ASU's Resilience Solutions Group
 - <http://www.asu.edu/resilience>
- St. Luke's Health Initiatives
 - <http://www.slhs.org>

